

Cells Revision Worksheet

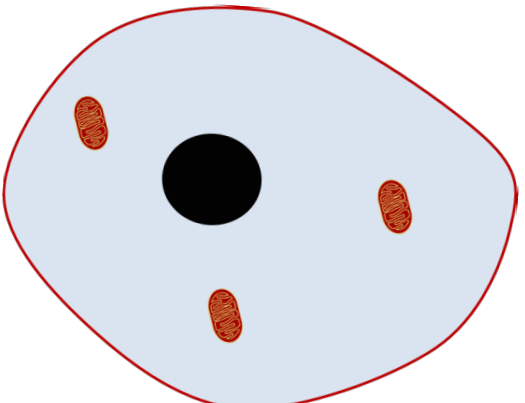
State what the 7 **life processes** are

1. 4.
2. 5.
3. 6.
7.

Explain why a robot that can move is not a **living thing**.

.....
.....

Label all the parts of the **animal cell** below:



The diagram shows an irregularly shaped animal cell with a red outline. Inside, there is a large black nucleus, three red bean-shaped mitochondria with internal folds, and a light blue cytoplasm.

Draw a diagram of a **plant cell**. Draw lines to label all of the parts below:

Nucleus
Cell Wall
Cell Membrane
Vacuole
Chloroplast
Mitochondria
Cytoplasm

Complete the table below describing the **function** of each part in a **cell**.

	Controls the cell and stores the DNA.
Cytoplasm	
Cell Membrane	
Cell Wall	
	Where respiration happens (the process that releases energy).
Chloroplasts	
Vacuole	

Compare and contrast **animal** and **plant cells**.

.....
.....
.....

Define the term '**tissue**'.

.....
.....
.....

Describe the different **tissues** found in human **hearts** and their **functions**.

.....
.....
.....

Describe the role of **root hair tissues** in **plants**.

.....
.....
.....

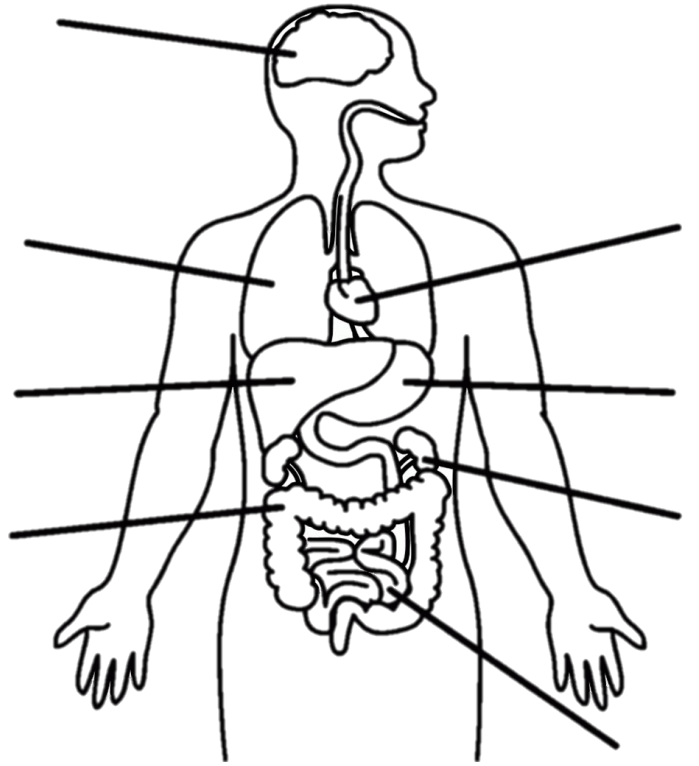
State the **tissue** that carries **water** from the **roots** to the rest of the **plant**.

.....

Write out a **method** for how a student would make a slide of **onion cells** and then look at them under the **microscope**.

.....
.....
.....
.....
.....
.....
.....
.....
.....
.....
.....
.....

Label all of the **organs** on the human body below.



The diagram shows a human silhouette with lines pointing to the brain, heart, lungs, stomach, liver, intestines, and other internal organs.

Match up the different **organs** to their **function**.

- The brain... breaks up and absorbs food.
- The heart... pumps blood around the body.
- The lungs... are used for breathing.
- The stomach... removes water from unwanted food.
- The small intestine... breaks up food.
- The large intestine... controls the body.
- The kidneys... makes and destroys substances.
- The liver... clean the blood and make urine.

Describe how **cells**, **tissues**, **organs** and **organ systems** are related.

.....

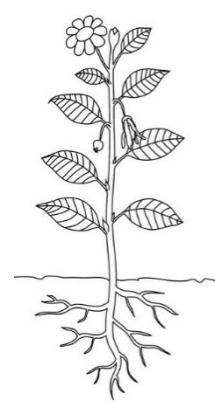
.....

.....

.....

.....

Label the **plant organs** on the diagram below:



Rate the following on how well you think you can do them:



I can...

- Recall and describe life processes
- Explain the difference between organisms and non-living things.
- Identify and locate important plant and animal organs.
- Describe the functions of important plant and animal organs.
- Describe what happens in photosynthesis.
- Identify and recall named tissues in human and plant organs.
- Describe the function of different tissues in an organ.
- Describe how to prepare a microscope slide.
- Describe how to use a light microscope to examine a specimen.
- Identify the main parts of animal cells and plant cells and describe their functions.
- Identify and recall the main organs in the plant water transport system.
- Identify and recall the main organs in the human locomotor, digestive, circulatory, breathing, urinary and nervous system.

Describe what each **plant organ** does.

.....

.....

.....

Define the term '**organ system**'

.....

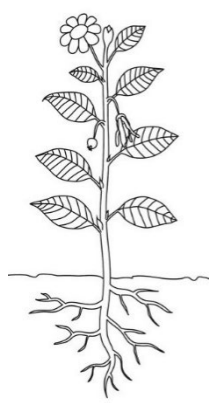
Complete the table below:

Organ System	Organs Involved	Function
	Heart, blood vessels	Transports oxygen and nutrients around our bodies in blood.
Digestive System		
Urinary System	Kidneys, bladder	Gets rid of waste materials produced in the body.
		Allows us to sense things.
Locomotor System		
Water Transport System (in plants)		

Match up the different **organs** to their **function**.

- The brain...** controls the body.
- The heart...** pumps blood around the body.
- The lungs...** are used for breathing.
- The stomach...** removes water from unwanted food.
- The small intestine...** breaks up food.
- The large intestine...** breaks up and absorbs food.
- The kidneys...** makes and destroys substances.
- The liver...** clean the blood and make urine.

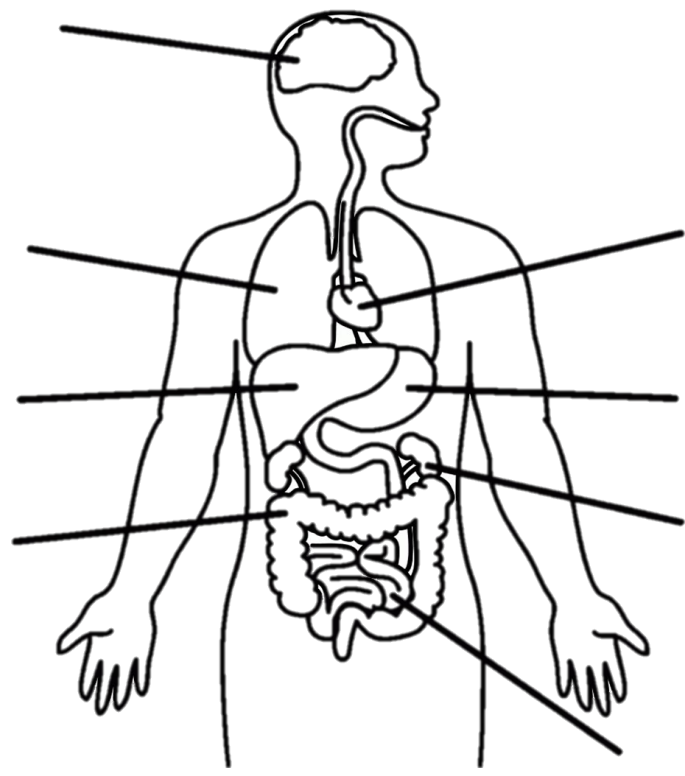
Label the **plant organs** on the diagram below:



Draw a diagram of a **plant cell**. Draw lines to label all of the parts below:

- Nucleus**
- Cell Wall**
- Cell Membrane**
- Vacuole**
- Chloroplast**
- Mitochondria**
- Cytoplasm**

Label all of the **organs** on the human body below.



Label all the parts of the **animal cell** below:

